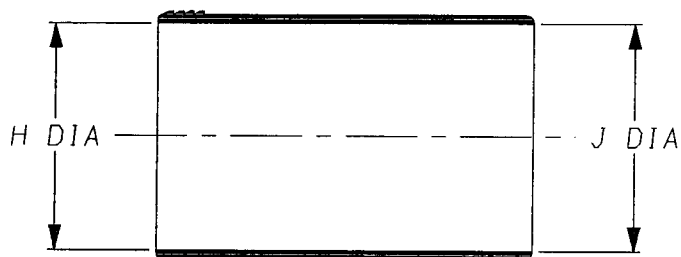
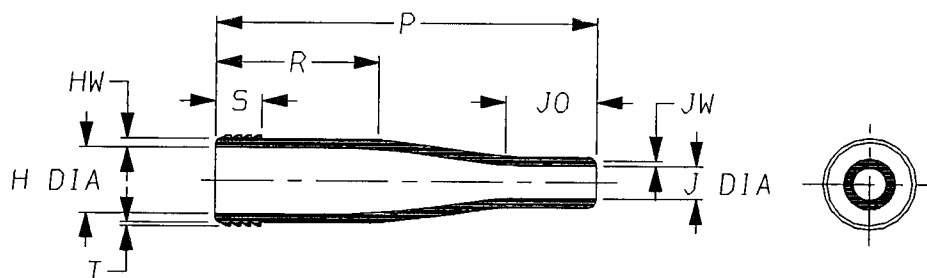


a) Part as supplied

QFT*-130/42



b) Part after unrestricted recovery without clips installed.



DIMENSIONS (in millimetres).

Part Number	H		J		P	R	S	T	J0	HW	JW
	Min	Max	Min	Max	±10%	±10%	±10%	±10%	±10%	±20%	±20%
	a	b	a	b	b	b	b	b	b	b	b
QFT1	31	9.0	31	4.4	60	25	9.0	0.75	12	1.5	1.0
QFT2	43	14.0	43	7.0	75	32	9.0	0.75	18	1.8	1.0
QFT3	57	24.0	57	12.0	90	35	9.0	0.75	25	1.8	1.8

See over for ordering information

Copyright (!)

The copyright in this drawing is the property of Tyco Electronics UK Ltd. The drawing is issued on the condition that it is not copied, reproduced or disclosed to a third party, either in whole or in part without the prior written consent of Tyco Electronics UK Ltd.

Drawn A.LILLEY. Checked Issue 2 Date February 2001 Conforms to 150 Recommendations
 Approval 3rd Angle Projection
 Design MKTG Q.A. Not to Scale

Iss.	Date	E.C.R. No.	Details of Change
1	February 2001	CR01-HM-0001	Size3, JW was 1.0

Ordering Information

QFT*-130/42-0

Adhesive Slash Number
 Material Dash Number
 Part size
 Base Part Number

10 Parts supplied per bag with 30 clips

QFT*-130/42-B500-0

Bulk pack 500 parts per poly bag
 Adhesive Slash Number
 Material Dash Number
 Part size
 Base Part Number

Order clips (QFT-CLIP-B500) separately (500 per poly bag)

AS SUPPLIED DIMENSIONS ARE FOR UNCOATED PARTS,
WHEN COATING IS ADDED, ENTRY DIAMETERS WILL REDUCE BY 1.5mm MAX.

Raychem Wire & Harness
 a Division of Tyco Electronics
 Faraday Road,
 Swindon, Wiltshire, England. SN3 5JA
 Telephone: (01793) 528171 Fax: 572516

Raychem Wire & Harness
 a Division of Tyco Electronics
 300, Constitution Drive, Menlo Park,
 California 94025-1164, USA
 Telephone (650) 361-3333 Fax: (650) 361-5579