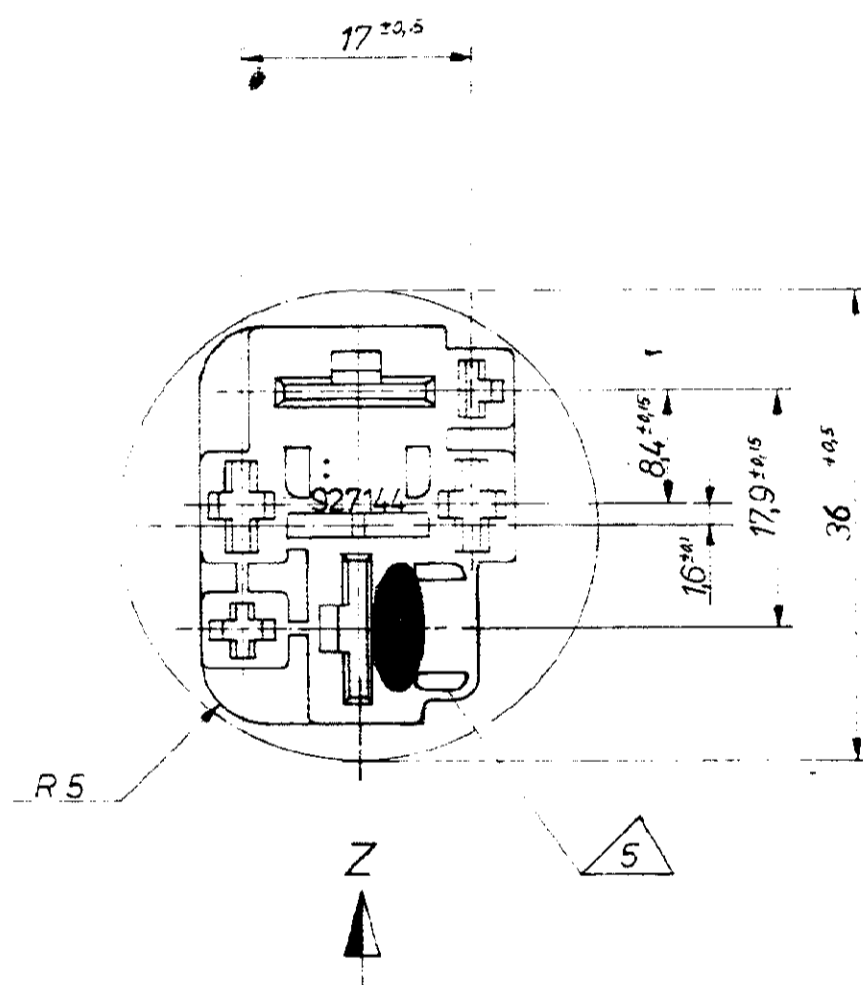


FORD N° 83 BG 14488 AAA

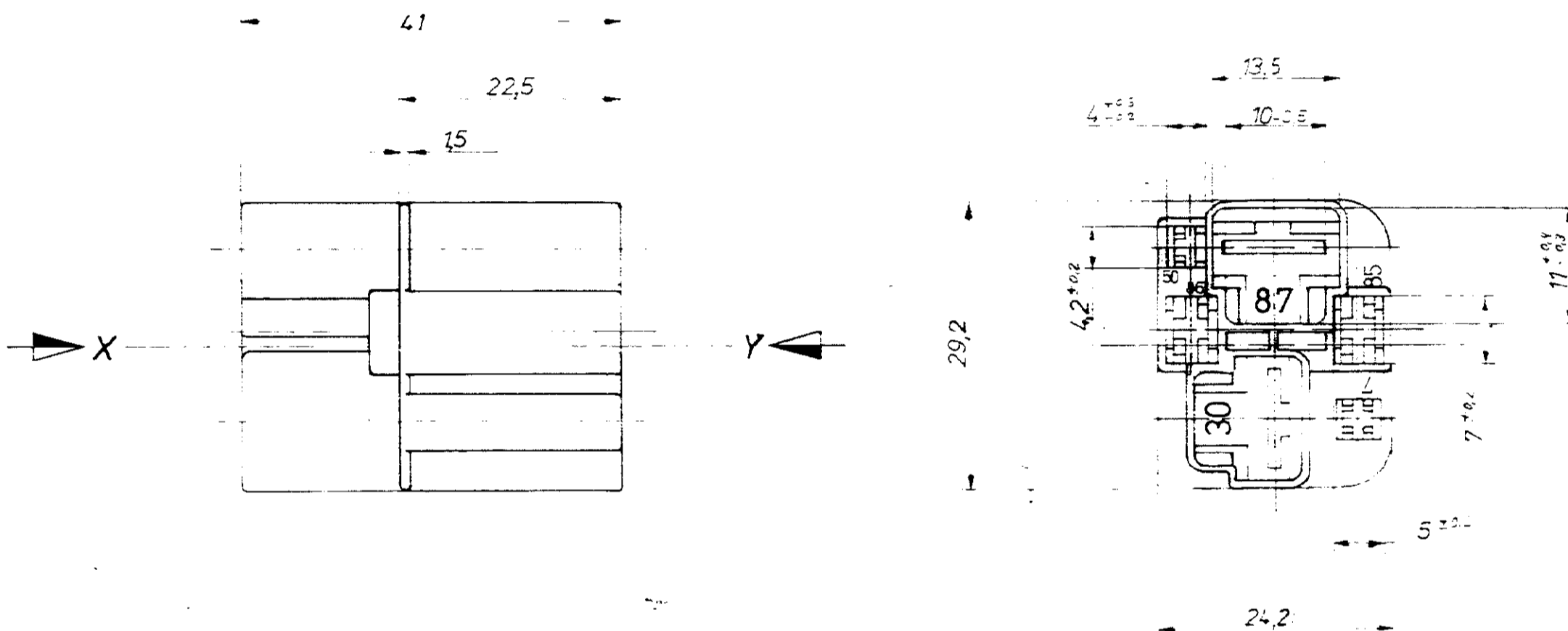
Änderungen, die dem technischen Fortschritt dienen, behalten wir uns vor.

| Zerlegung | gezeichnet durch | nr | A. befragt | Tag | Notiz |
|-----------|------------------|----|-----------------|---------|-------|
| C | 17.81 | 1 | Durchbrüche neu | 15.9.81 | |
| AM | | 2 | | | |
| A | | 3 | | | |

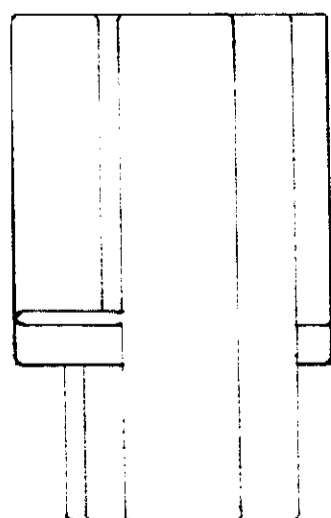
Ansicht view Y



Ansicht view X

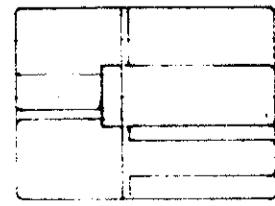
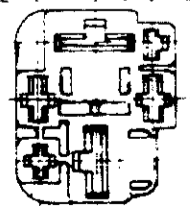


Ansicht view Z



FOR FORD ONLY

Relaiskontur
Relayfigure



Maßstab
scale 1:1

- 1 Nicht benutzte Wanddicken
wall thickness except as noted 0,8 mm
- 2 Nicht benutzte Radien
all radii except as noted R 0,6 mm
- 3 Gehäusematerial gemäß
housing material according to FORD SPEC. SKM-4D-9585-A (Zytel 101)
- 4 Gehäuse passend zu
housing fitting with 2 x FORD SL 101.23 (MINI SPRING REC.)
2 x FORD SL 101.36 (DOPPELFLACHFEDERKONTAKT)
2 x FORD SL 101.73 (KOMBI KONTAKT AMP 926 935)
- 4 Relaissockel passend zu
relais connector housing fitting with BOSCH RELAIS BOSCH N°A 335 502 171
- 5 Kundenwarenzeichen nach
customer trade mark according to FORD SPEC. EU 2922 A N° 2
- 6 Alle Außenwände mit matter Oberfläche
all outside walls with frosted surface

| | | | |
|------------|------|------------------------|----------|
| | | AMP | |
| | | Spaltger. Relaissockel | |
| 927 144 -1 | FA56 | schwarz | K |
| | | C 927 144 | |
| 17.781 | | | 1 von 1 |

Warr/was 87-9325